

> DATASHEET

COMMERCIAL CASEMENT WINDOW

**FEATURES**> **ARCHITECTURAL AESTHETICS**

Slim and modern aluminium frames with sightlines starting from just 53mm

> **ENERGY EFFICIENT**

Thermally broken frame achieves U-Values as low as 1.4 W/m²K with a double glazed unit, and a B-C rating on the BFRC WER scheme

> **HEIGHTENED SECURITY**

Features multi-point locking system, PAS 24 and Secured By Design Certified, and in compliance with Part Q of the building regulations

> **FLEXIBLE CONFIGURATIONS**

Choose from top hung, side hung, bottom hung and multi-light configurations

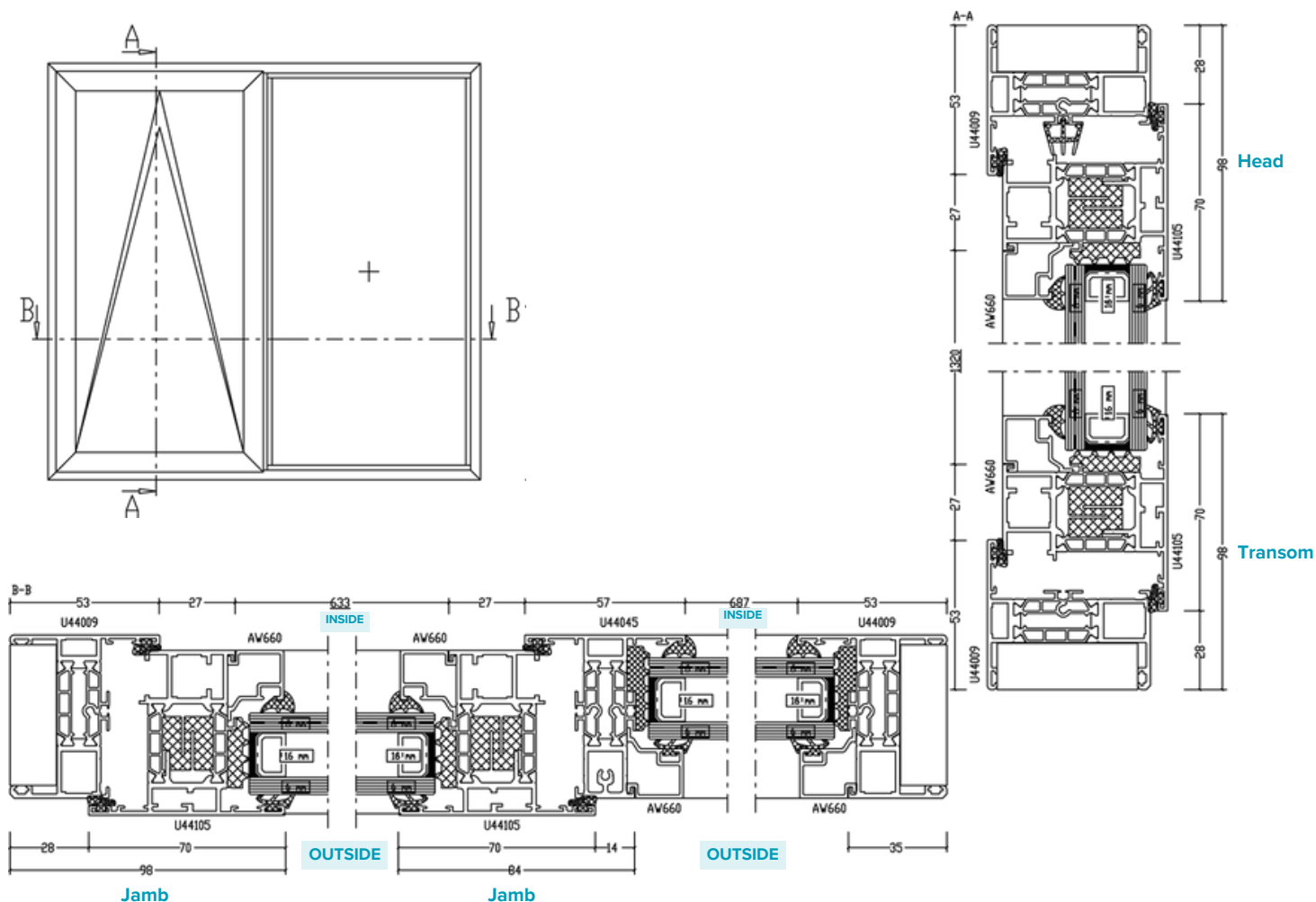
> **GLAZING OPTIONS**

Internal Glazed with 28mm to 40mm glazing thickness and infill panels

> **CHOICE OF FINISH**

Available in any single RAL colour, dual colour, textured or an anodised finish

TECHNICAL DRAWINGS



| SIZE & WEIGHT LIMITS | |
|----------------------|------------------|
| Max Glass Thickness | 40mm |
| Top Hung | |
| Max Size (mm) | 1750w x 2500h |
| Min Size (mm) | 300w x 300h |
| Max Weight | 180kg |
| Side Hung | |
| Max Size (mm) | 1300w x 1750h |
| Min Size (mm) | 300w x 300h |
| Max Weight | 55kg |
| Bottom Hung | |
| Max Size (mm) | 1750w x 2500h |
| Min Size (mm) | 300w x 200h |
| Max Weight | 100kg (2 hinges) |

| PERFORMANCE | |
|----------------------------|---|
| U-Value (Double Glazing) | (Ug: 1.0 W/m ² K) 1.4 W/m ² K |
| U-Value (Triple Glazing) | (Ug: 0.8 W/m ² K) 1.2 W/m ² K |
| Window Energy Rating (WER) | B - C |
| Acoustic Performance (dB) | Rw (C;Ctr) 42 (-1;-5) dB |
| Air Tightness (Pa) | Class 4 |
| Water Tightness (Pa) | Class 9a |
| Wind Load (Pa) | Class E2400 |
| Security | PAS 24 & SBD |
| Smoke Vent Compliance | EN12101-2:2003 Annex G |

| BUILDING REGULATIONS | |
|----------------------|-----------|
| Part L | Compliant |
| Part F | Compliant |
| Part M | Compliant |
| Part Q | Compliant |

| SIGHTLINES | |
|------------|-------|
| Head | 98mm |
| Cill | 53mm |
| Transom | 101mm |
| Jamb | 98mm |

| OPTIONS | |
|-----------------|---|
| Single Colour | ✓ |
| Dual Colour | ✓ |
| Textured Finish | ✓ |
| Anodised Finish | ✓ |